

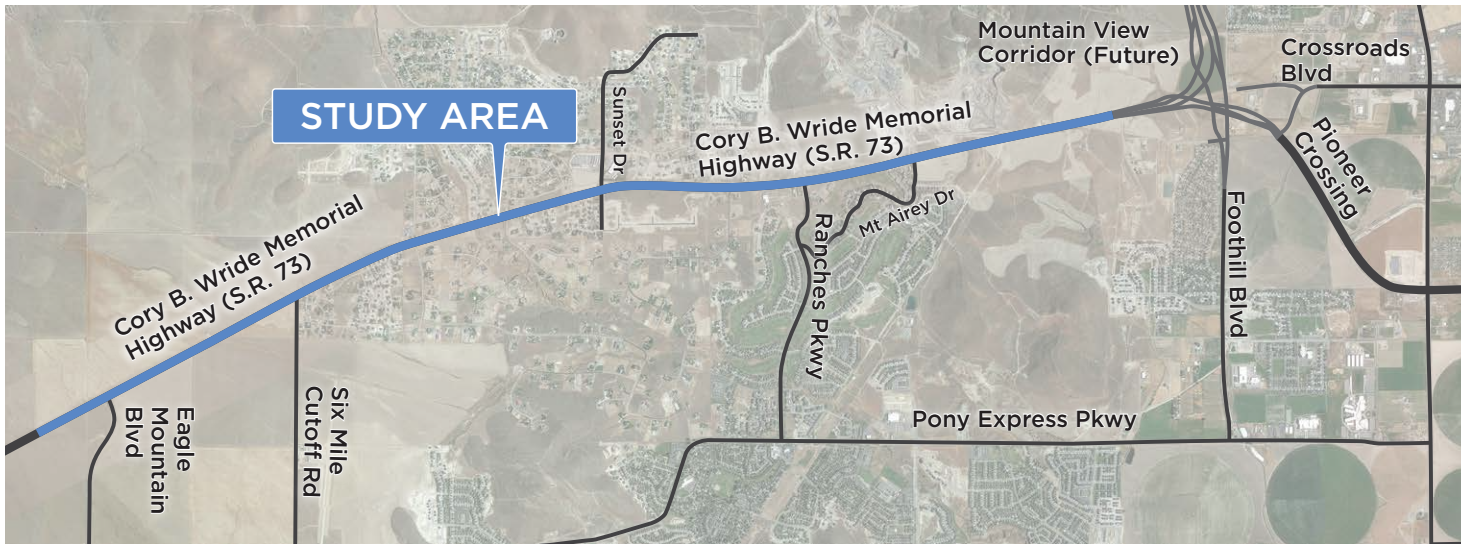
# S.R. 73 STATE ENVIRONMENTAL STUDY

Pioneer Crossing to Eagle Mountain Boulevard

## State Route 73

**ENVIRONMENTAL STUDY**

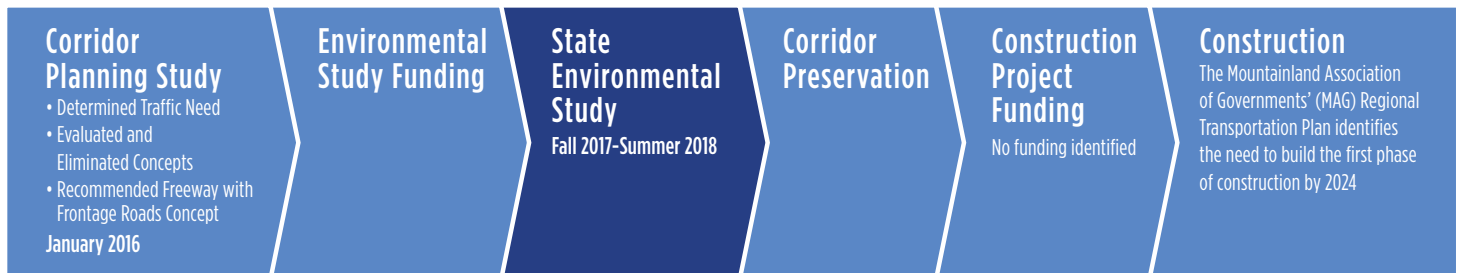
Eagle Mountain to Saratoga Springs



To address the growth and travel demands of Eagle Mountain and the surrounding areas, the Utah Department of Transportation (UDOT) is conducting a State Environmental Study (SES) along Cory B. Wride Memorial Highway (S.R. 73) from Pioneer Crossing to Eagle Mountain Blvd. The SES will evaluate the impacts of and determine a preferred alignment for a future freeway with frontage roads system that will reduce projected traffic congestion and travel delay. The SES will also include a complete public involvement process so UDOT can consider stakeholder input throughout the study.

## Transportation Project Phases

The State Environmental Study is the next phase necessary to fulfill all required environmental clearances, allocate funding and preserve the land needed to build the preferred alignment.





Current S.R. 73 near Mt. Airey Dr.

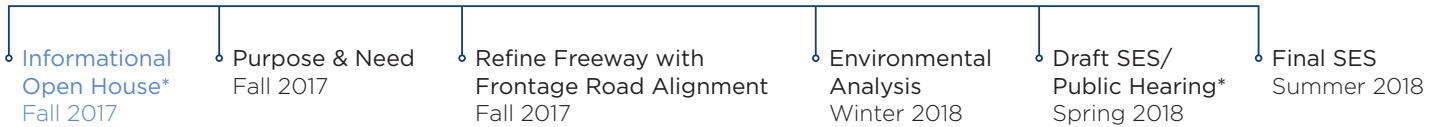


Freeway with Frontage Roads concept visualization near Mt. Airey Dr.

## Freeway with Frontage Roads

UDOT completed a six-month Corridor Planning Study in January 2016. The Corridor Planning Study team recommended a Freeway with Frontage Roads concept based on preliminary evaluation of several transportation concepts and stakeholder input. The Freeway with Frontage Roads concept was recommended for further study because it best addresses congestion, preserves access, and accommodates transit, bike lane and trail improvements.

## State Environmental Study Process and Timeline



\* Public Meeting & Review Period

## Stay in Touch

Join the contact list by sending an email with “Join the contact list” in the subject line.

✉ [sr73@utah.gov](mailto:sr73@utah.gov)

☎ 801-707-3662

🌐 [udot.utah.gov/sr73](http://udot.utah.gov/sr73)

To learn about other transportation projects in the area, visit the UDOT Region Three web page ([www.udot.utah.gov/go/region3](http://www.udot.utah.gov/go/region3)) and click on Local Government Map under Helpful Links.